

MINIMUM LANE CLOSURE TAPER LENGTH = L (feet)

LANE WIDTH (feet)	Posted Speed (mph)									
	25	30	35	40	45	50	55	60	65	70
-10	105	150	205	270	450	500	550	-	-	-
-11	115	165	225	295	495	550	605	660	-	-
-12	125	180	245	320	540	600	660	720	780	840

MINIMUM SHOULDER TAPER LENGTH = L/3 (feet)

SHOULDER WIDTH (feet)	Posted Speed (mph)									
	25	30	35	40	45	50	55	60	65	70
5'	40	40	60	90	120	130	150	160	170	190
10'	40	60	90	120	150	170	190	200	220	240

USE A MINIMUM 3 DEVICES TAPER FOR SHOULDER LESS THAN 8'.

CHANNELIZATION DEVICE SPACING (FT)

MPH	TAPER	TANGENT
50/65	10 TO 20	80
30/45	10 TO 20	60
25/30	10 TO 20	40

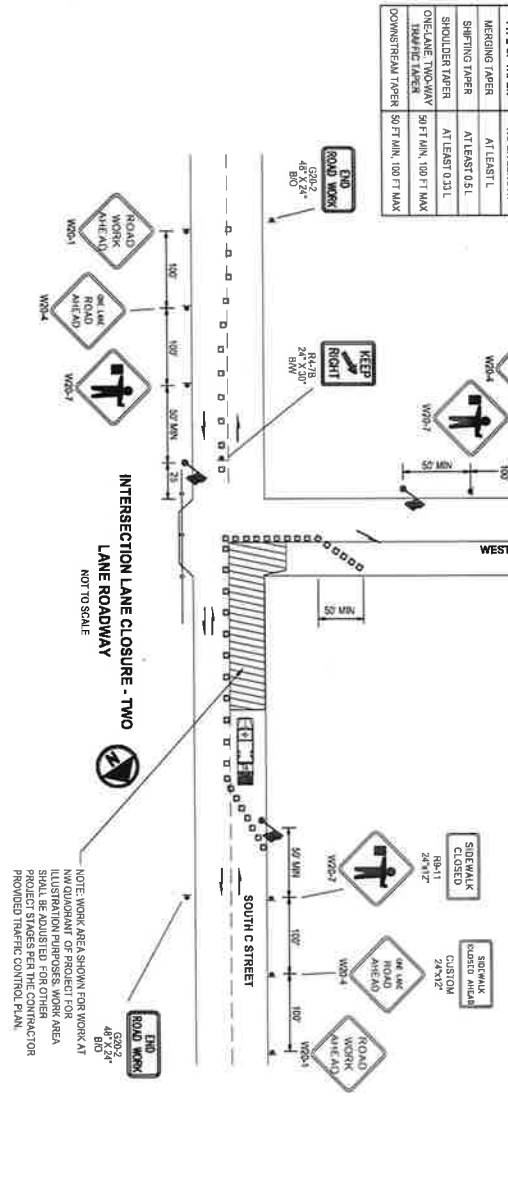
TAPER LENGTH CRITERIA FOR TEMPORARY TRAFFIC CONTROL ZONES

TYPE OF TAPER	TAPER LENGTH
MERGING TAPER	AT LEAST L
SHOULDER TAPER	AT LEAST 0.5L
ONE LANE TAPER	90 FT MIN, 100 FT MAX
DOWNSTREAM TAPER	50 FT MIN, 100 FT MAX

SIGN SPACING = X (1)

TYPE OF ROADWAY	57.70 MPH	1000' +/-
FRONTAGE & EXPRESSWAYS	601.65 MPH	800' +/-
RURAL HIGHWAYS	45.55 MPH	600' +/-
RURAL ROADS & URBAN ARTERIALS	35.40 MPH	500' +/-
URBAN ARTERIALS	25.30 MPH	400' +/-
RESIDENTIAL & BUSINESS DISTRICTS	25.30 MPH	300' +/-

(1) ALL SPACING MAY BE ADJUSTED TO ACCOMMODATE INTERCHANGE RAMP, APPROACH INTERSECTIONS AND DRIVEWAYS.
(2) THIS SPACING MAY BE REDUCED IN URBAN AREAS TO FIT ROADWAY CONDITIONS.



BUFFER DATA

LONGITUDINAL BUFFER SPACE = B	Speed (MPH)									
LENGTH (FEET)	155	200	250	305	350	425	495	570	645	720
TRANSPORTABLE ATTENUATOR ROLL AHEAD DISTANCE = R										
HOST VEHICLE WEIGHT > 22,000 LBS										
< 4.5 MPH	45.55 MPH	> 4.5 MPH	< 4.5 MPH	45.55 MPH	> 4.5 MPH	45.55 MPH	> 4.5 MPH	45.55 MPH	> 4.5 MPH	45.55 MPH
100'	125'	172'	7x'	100'	150'	197'				

PROTECTIVE VEHICLE (WORK VEHICLE) = R
NO SPECIFIED DISTANCE REQUIRED

NO PARKING
6:30 AM TO 7:30 PM
R7-2b 17"x18"

* INSTALL ON TYPE I BARBOCDES THROUGHOUT THE WORK AREA 24 HOURS PRIOR TO IMPLEMENTING TRAFFIC CONTROL. ENFORCEMENT REQUIRED.
SPACING OF NO PARKING SIGNS SHALL BE AS SHOWN AND WILL BE CLOSED OR AS DIRECTED BY ENGINEER.

FOR PROJECT INFORMATION
1-362-343-3433
924-501
48" X 36" PHONE NUMBER TO BE SPREAD BY HANDMAN

* PROJECT INFORMATION SIGNS TO BE PROVIDED BY THE CITY SHALL BE PLACED AT THE BEGINNING AND END OF THE PROJECT CORRIDOR. CONTACT PROJECT LOCATION WITH ENGINEER.

LEGEND

- TEMPORARY TRAFFIC CONTROL SIGN
- TRAFFIC CONE OR TUBULAR MARKER
- FLASHING ARROW SIGN - TYPE C
- TRAVEL DIRECTION OF OPEN LANE
- PROTECTIVE VEHICLE - ATTENUATOR
- OPTIONAL FOR SPEEDS 40 MPH OR LESS
- WORK AREA

- ### NOTES:
- CONTRACTOR SHALL PROVIDE A TRAFFIC CONTROL PLAN FOR APPROVAL MEETING THE MINIMUM REQUIREMENTS SHOWN HERE. SEE SPECIAL PROVISIONS.
 - A MINIMUM 48" HIGH PROTECTIVE ROLL SHALL BE MAINTAINED AT ALL TIMES OR AN EQUIVALENT ROLLER SHALL BE PROVIDED. ROLLER SHALL BE IN ACCORDANCE WITH WSDOT FIELD GUIDE FOR ACCESSIBLE PUBLIC RIGHT OF WAY.
 - SIGN SPACING SHOWN ON THE PLANS MAY BE ADJUSTED IN THE FIELD TO ACCOMMODATE INTERSECTIONS, DRIVEWAYS, VISIBILITY AND OTHER VARIABLES.
 - CHANNELIZATION DEVICE SPACING: 10' TO 20' ON TAPER SECTIONS, 40' ON TANGENT SECTIONS.
 - SEE SPECIAL PROVISIONS FOR ADDITIONAL REQUIREMENTS.
 - ALL SIGNS NOT MOUNTED ON BARBOCDES MAY BE MOUNTED ON TPOSS IF CLEARLY VISIBLE TO TRAFFIC. OTHERWISE SIGNS SHALL BE MOUNTED ON 4" X 4" WOOD POSTS.
 - ALL CHANNELIZATION DEVICES SHALL BE CONES OR TUBULAR MARKERS.
 - PLANS SHOW MINIMUM SIGNAGE TO DIRECT VEHICLES THROUGH THE WORK AREA. CONTRACTOR SHALL PROVIDE ADDITIONAL SIGNAGE AND OTHER DEVICES NECESSARY TO SAFELY DIRECT VEHICLES AND PEDESTRIAN TRAFFIC THROUGH AND AROUND THE CONSTRUCTION AREAS AS NECESSARY TO ACCOMMODATE HIS CONSTRUCTION ACTIVITIES.
 - SINGLE LANE CLOSURES ONLY ARE ALLOWED ON 16TH STREET AND C STREET WITHIN THE FOLLOWING TIME LIMITS:
 - 16TH STREET: 7:00 AM TO 5:00 PM MONDAY THROUGH FRIDAY
 - C STREET: 7:00 AM TO 5:00 PM MONDAY THROUGH FRIDAY
 - FULL STREET CLOSURES ARE ALLOWED ON D AND E STREET WITH THE FOLLOWING LIMITATION:
 - AT NO TIME SHALL A FULL STREET CLOSURE OF D STREET COINCIDE WITH A FULL STREET CLOSURE OF E STREET.
 - CONTRACTOR SHALL MAINTAIN ACCESS TO AND EGRESS FROM ALL PROPERTIES WITHIN THE PROJECT LIMITS AT ALL TIMES. AT NO TIME SHALL A COMPLETE CLOSURE OF C STREET BE ALLOWED.
 - SEE SHEET TC FOR BUFFER LENGTH, DEVICE SPACING, TAPER LENGTH DATA TABLES, AND MISCELLANEOUS SIGN DETAILS.
 - PRIOR TO IMPLEMENTING TRAFFIC CONTROL, CONTRACTOR SHALL INSTALL NO PARKING SIGNS ON TYPE I BARBOCDES THROUGHOUT THE WORK AREA 24 HOURS IN ADVANCE.
 - ALL SIGNS SHALL BE 48" X 36" UNLESS OTHERWISE SHOWN. ALL SIGNS SHALL BE BLACK ON ORANGE, UNLESS OTHERWISE SHOWN.
 - SIGN SPACING MAY BE REDUCED IN URBAN AREAS TO FIT ROADWAY CONDITIONS.
 - PROTECTIVE VEHICLE - FOR SPEEDS 40 MPH OR LESS, VAN USE A WORK VEHICLE STRATEGICALLY PLACED TO PROTECT WORK AREA.
 - EXTEND CHANNELIZATION DEVICE TAPER ACROSS SHOULDER.
 - CONTACT AND COORDINATE WITH IMPACTED TRANSIT AGENCIES PRIOR TO IMPLEMENTING ANY CLOSURES. SEE SPECIAL PROVISIONS SECTION 14.7.
 - STRATEGICALLY POSITION WORK VEHICLE TO PROTECT WORK CORN. 40' OR RECOMMENDED.

DATE	REVISION		<h2>16TH STREET LID RETROFIT PROJECT</h2> <h3>C STREET TRAFFIC CONTROL</h3>	DWG. FILENAME: 2342191021_TC
				PROJECT NO: 234-2191-029
V. SCALE: 1" = N/A		DESIGNED BY: CTO		DRAWN BY: CTO
CONTOUR INTERVAL: N/A		H. SCALE: 1" = N/A		DATE: MAY 2025
SURVEY FILENAME: N/A				SHEET TC1
		JONATHAN BOEHME, P.E. CITY ENGINEER 321 E. 5TH STREET PORT ANGELES, WASHINGTON, 98362 PHONE: (360) 457-0411		22 OF 24